

Indoor Trade Show

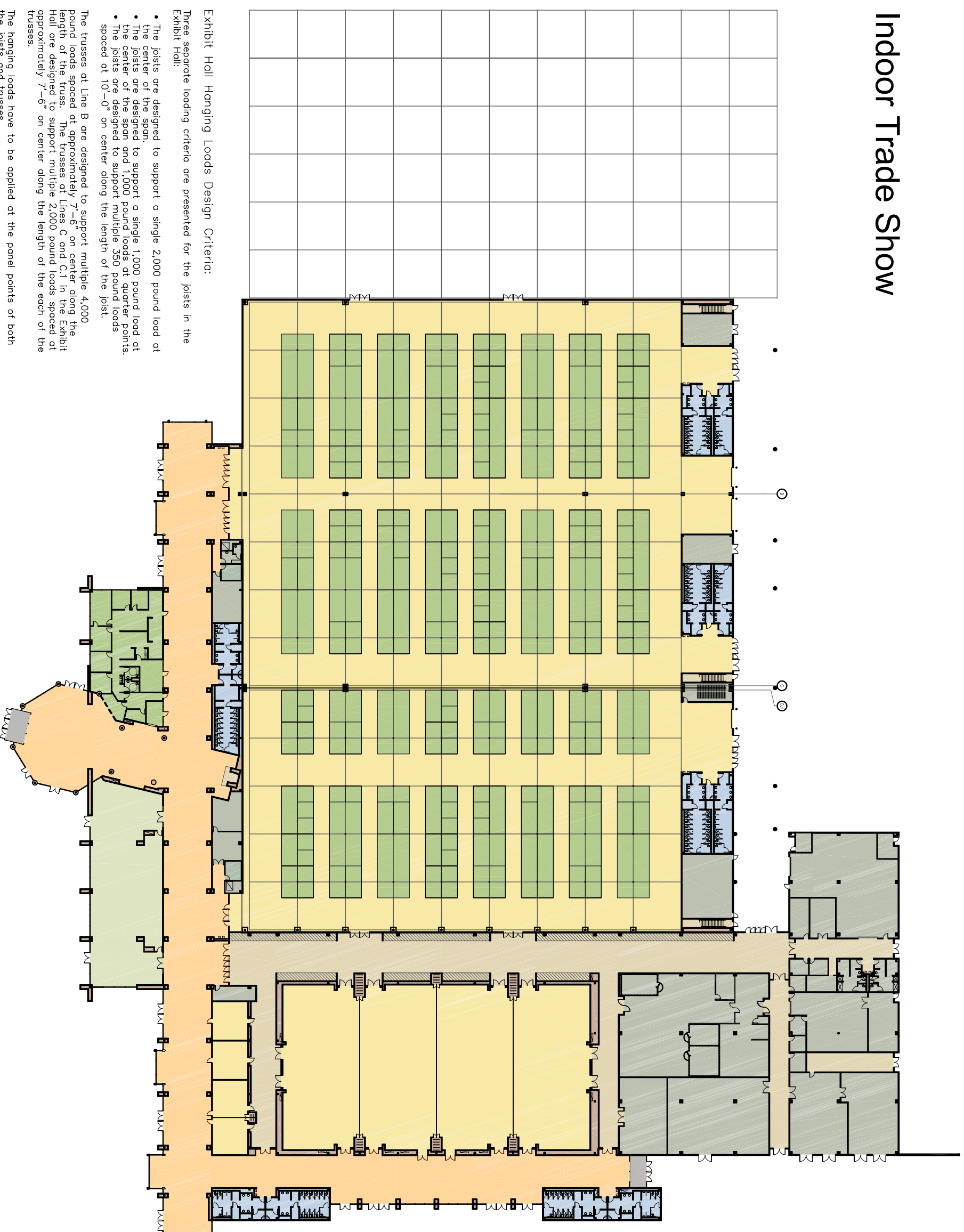


Exhibit Hall Hanging Loads Design Criteria:

Three separate loading criteria are presented for the joists in the Exhibit Hall:

- The joists are designed to support a single 2,000 pound load at the center of the span.
- The joists are designed to support a single 1,000 pound load at the center of the span and 1,000 pound loads at quarter points.
- The joists are designed to support multiple 350 pound loads spaced at 10'-0" on center along the length of the joist.

The trusses at Line B are designed to support multiple 4,000 pound loads spaced at approximately 7'-6" on center along the length of the truss. The trusses at Lines C and C.1 in the Exhibit Hall are designed to support multiple 2,000 pound loads spaced at approximately 7'-6" on center along the length of the each of the trusses.

The hanging loads have to be applied at the panel points of both the joists and trusses.